

Rappahannock Goodwill Industries Goodnews

Fall 2014

Changing Lives Through the Power of Work

Collaboration Zone Opens For Business



“RGI has always been a believer in collaborative thinking.”

Donnie Tolson, RGI's Chief Financial Officer

Rappahannock Goodwill Industries (RGI) is proud of its reputation for lending support to other community based organizations. The belief that RGI is “of the neighborhood, not just in it” was a driving force during RGI’s strategic planning process in 2012. It brought us to the conclusion that if we sought collaborative opportunities with organizations whose visions align with our own, and if we provided the physical space required to serve these organizations, people with barriers to employment would be one step closer to enjoying full social and economic participation in their communities. What started out as a seedling of an idea for a 9,000 square foot Collaboration Zone in the Goodwill Community Resource Center has come to fruition! RGI is excited to announce our first two partners, FAHASS and Recovery in Motion, moved into their new space this summer. The Childcare Network will follow in October.

FAHASS is a private nonprofit whose mission is to positively impact individual and community health by providing integrated wellness, prevention, and health

navigation services. Recovery in Motion is both an organization and a support center. It offers a variety of supportive services including support groups and one-on-one wellness coaching for individuals with mental health challenges and/or substance use disorders. The Childcare Network improves the lives of children by providing information, resources, and training to children’s parents and caregivers. With the addition of these three organizations, the Collaboration Zone is at 75% occupancy. Rental rates for the space are well below the market and the goal is to be at 100% capacity in early 2015.

“RGI has always been a believer in collaborative thinking,” said Donnie Tolson, RGI’s Chief Financial Officer. “The Collaboration Zone helps like-minded organizations stitch together an integrated array of community supports in a cost effective way. Individually, each organization brings benefit to people in need. Together, we can multiply the contributions of the individual organizations.”

Building Community, One Square Foot at a Time



Woody Van Valkenburgh
 President/CEO
 Rappahannock Goodwill Industries

By Woody Van Valkenburgh

A wise man once said, "The whole is greater than the sum of its parts." Here at Rappahannock Goodwill Industries, we tend to agree with Aristotle, and that's

why our desire to be inclusive of other businesses and organizations led to a dedicated 10,000 square foot space we're calling the Goodwill Community Learning Center. This area, once it's built out, will be located in the Goodwill Community Resource Center on Market Street in Spotsylvania.

The goal for the Community Learning Center is to provide a positive and affirming space for counseling, learning, training, and other services designed to propel people forward in their professional and personal lives. Businesses and organizations committed to helping people meet their goals will be welcome to utilize the space once it's finished. Plans for the completed space include a satellite branch of the Central Rappahannock

Regional Library devoted to workforce development titles; a 125 seat training center that can be divided into two or three smaller spaces; a couple of private intake rooms for programs; a computer lab with 20 workstations loaded with learning software, including some 750 computer literacy programs created and compiled by Goodwill Industries of Eastern North Carolina; and a small area for childcare so adults can focus on the resources available while their little ones are safe and occupied with their own learning activities.

It all sounds fabulous, doesn't it? It will be. Right now the Community Learning Center is a vision waiting to be built. The space is there and ready to be completed just as soon as we raise the capital to bring it to life.

We're looking to raise \$450,000 to truly make this a center of activity for the community. I wholeheartedly believe in this concept and in the collective power of individuals, businesses, and organizations to enhance the communities where we live and work — we just need a bit of support to make it happen!



For more information or a tour of the future Community Learning Center, or if you would like to offer some financial support, call me at 540-371-3070 or email Woody.VanValkenburgh@FredGoodwill.org.

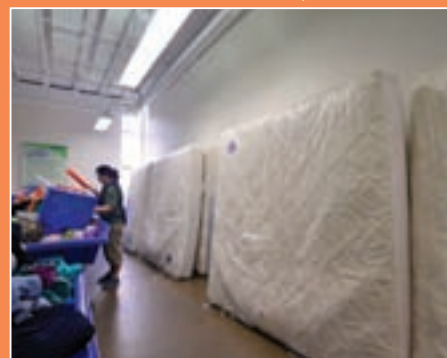
Goodwill Stores Offer MORE, In MORE Locations

It's an exciting time for Rappahannock Goodwill Industries! This year, RGI opened a new store in Harrison Crossing and a new store concept in Colonial Beach, the Goodwill RackStore. We will soon have a new store in Dahlgren that is scheduled to open late this year or in early 2015. Plans for the store include 10,000 square feet of retail space for gently used items like clothing, electronics, and household goods. The



new Dahlgren store will adopt RGI's Color of the Week price tagging method to alert customers to items on sale for 50% off. Another Goodwill store means more jobs for our community and an increase in funds to support RGI's Job Help Centers and employment and training programs for people with disabilities or other barriers to employment.

In addition to working on opening a new store, RGI is always



looking for innovative ways to bring customers valuable items at low prices. The most recent example is a new arrangement with a handful of local hotels. These hotels donate gently

used mattresses to RGI and we have them cleaned, sanitized, and tagged for sale at the Goodwill Outlet store. Mattresses don't stay around very long once they arrive at the Goodwill Outlet because of exceptionally low prices we are able to offer.

We say it often because it's important — your continued support of our stores and programs is a lifeline to the people we serve. Please donate your gently used clothing and goods to any of our nearly 50 Goodwill drop off locations located throughout the community. The chance to sell your unwanted goods provides a second chance for individuals who deserve one! To find a donation center near you, visit www.FredGoodwill.org.

Lending Library Benefits Workers and Employers

For a great number of people, finding employment is challenging. If you're a person with barriers to employment, including disabilities, applying for or keeping a job can feel downright impossible. At Rappahannock Goodwill Industries (RGI), we have seen that equipping individuals with the right technology helps these often qualified but overlooked people find and maintain employment. Thanks to a very generous gift from The Honeywell Charitable Fund of The Community Foundation of the Rappahannock River Region, RGI purchased multiple pieces of assistive technology. These various supports allow users to accomplish tasks they otherwise would not be able to do or do effectively.

Items are available to borrow for up to 90 days from RGI's Assistive Technology Lending Library and include iPods, iPads, screen readers, handheld video magnifiers, talking watches, voice amplifiers, and text-to-talk software. Additionally, there are three universal workstations for clients to use that are outfitted with enhancements including a large screen monitor, computer navigation software that assists individuals with sight impairments,

a large print keyboard, and an adjustable and wheelchair accessible work surface to meet the ergonomic needs of users.

"Typically, one of our partners such as the disAbility Resource Center or the Department for Aging and Rehabilitative Services will refer someone to our Assistive Technology Lending Library," said Megan Bergen, RGI's vice president of Mission Services. "We work with referred individuals to assess needs and then recommend technology we think will enhance their career potential. Training is provided and once the trial period is over, our staff assists clients with purchasing their own equipment or software at the lowest possible price."

RGI encourages employers interested in improving their own workplace environments to tour the Lending Library and investigate how they can accommodate employees who may benefit from such devices.

To learn more, contact Megan Bergen at 540-371-3070 or Megan.Bergen@FredGoodwill.org.



Goodwill's Work Crews Work for You

For more than 48 years, Rappahannock Goodwill Industries has believed in the power of work to change lives, especially for individuals living with disabilities. On September 18, Senator Tom Harkin (D-IA), Chairman of the Senate Health, Education, Labor, and Pensions (HELP) Committee, unveiled a report that highlighted, "The unemployment rate for people with disabilities is 12.8 percent, more than double the six percent unemployment rate for people without disabilities." In our service area alone, census data indicates there are nearly 28,000 people of working age with disabilities. Of that total, more than 17,000 are not employed. It's these willing and able individuals RGI is determined to reach and assist.

One of RGI's core job training programs is called Group Supported Employment and utilizes the "work crew" model, bringing together small groups of individuals with similar work interests who require intensive training and long-

term coaching and supervision. These crews work under the direct supervision of a trained RGI supervisor and perform an array of services including custodial, retail, administrative, and support service work for employers throughout the community. Currently, RGI work crews assist in Goodwill stores and provide custodial services to The Classic Car Center, Fredericksburg Baptist Church, and Fort A.P. Hill, an active duty installation of the United States Army.

Work crews are a win-win for the community, our employees, and the businesses they serve.

Rappahannock Goodwill's work crews are a win-win for the community, our employees, and the businesses they serve. Organizations who hire an RGI work crew simply pay a fixed rate or flat fee for a predetermined scope of work and RGI manages the recruitment, hiring, payroll, taxes, insurance and supervision. For more information on how RGI's work crews can work for you, visit www.FredGoodwill.org/outsourcing.



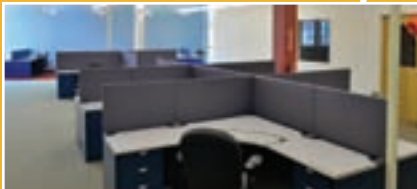
Rappahannock Goodwill Industries Goodnews

Fall 2014

Changing Lives Through the Power of Work

What's Inside...

Collaboration Zone Opens



Page 1

More Ways To Save



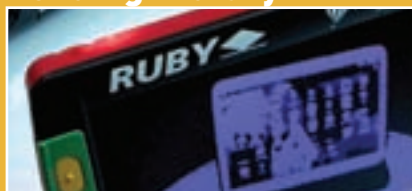
Page 2

Community Learning Center



Page 2

Lending Library



Page 3

Our Mission

To provide to people with barriers to employment – particularly those with disabilities – an array of quality vocational and educational services so that they can work most independently.

Newsletter Contributors

Dale Glasgow
Heather Fitz
Bob Martin
Julie Rettinger
Shawn Sloan
Woody Van Valkenburgh

Goodnews: Published by Rappahannock Goodwill Industries

To join our mailing lists, please call (800) 789-2816.

© Copyright 2014,
Rappahannock Goodwill Industries

Please visit our Web site:
www.FredGoodwill.org